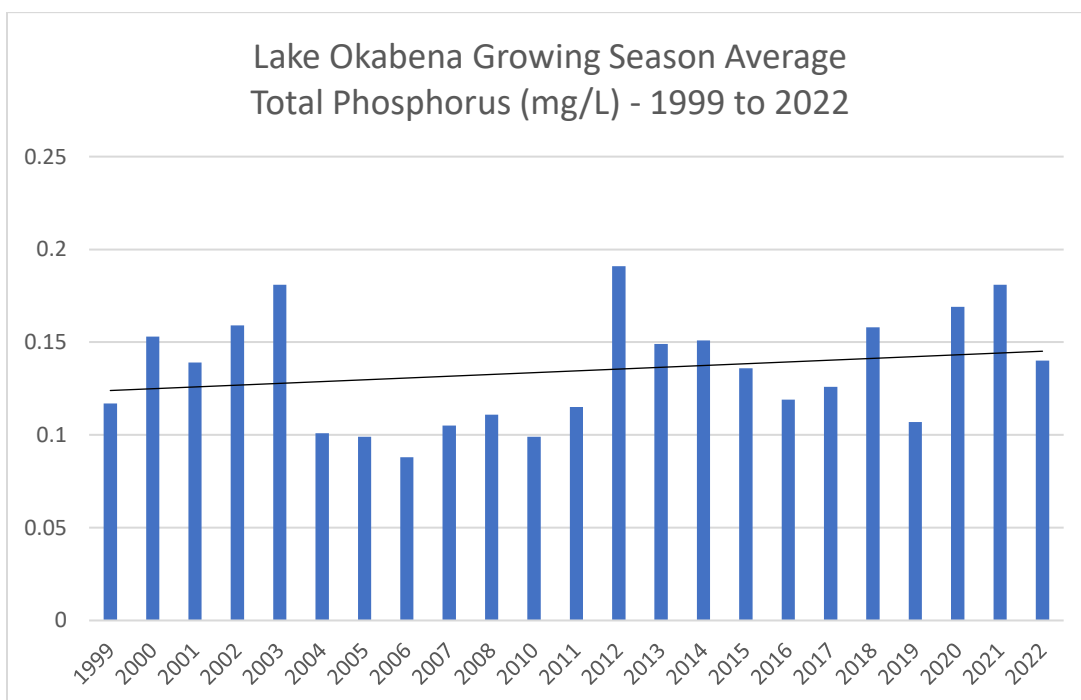
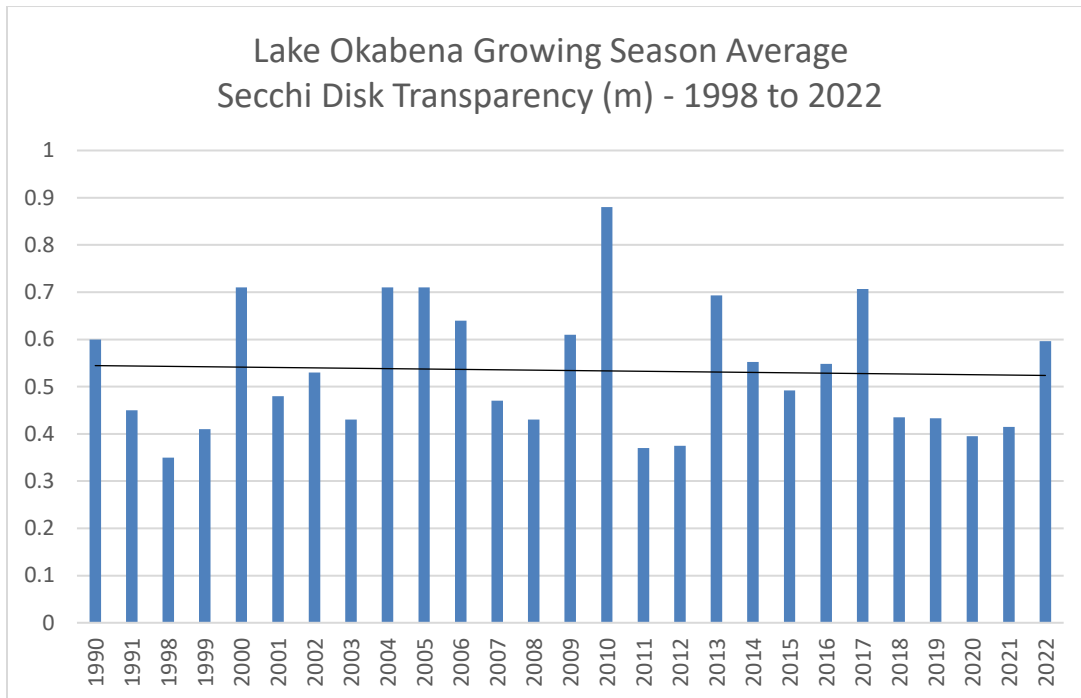
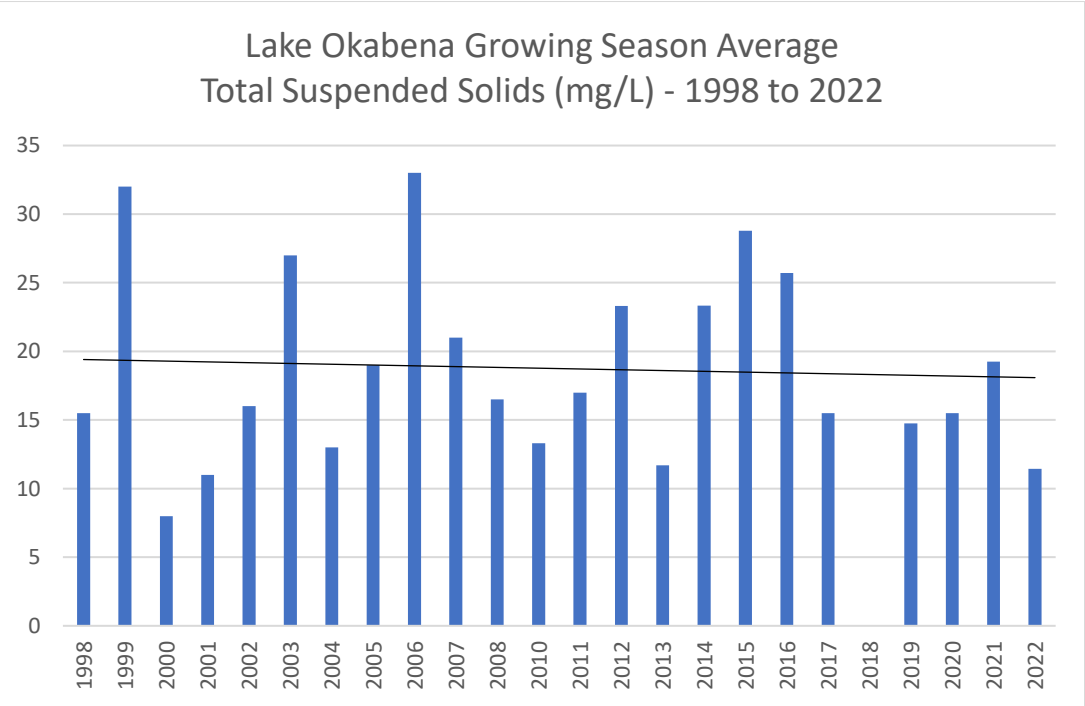
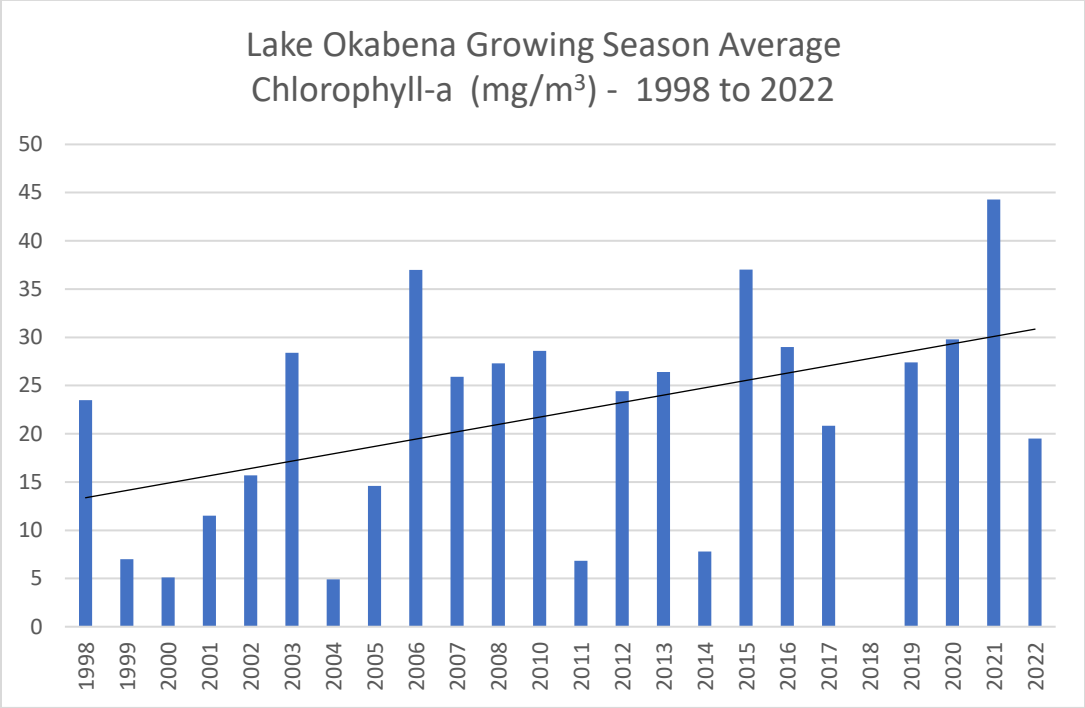


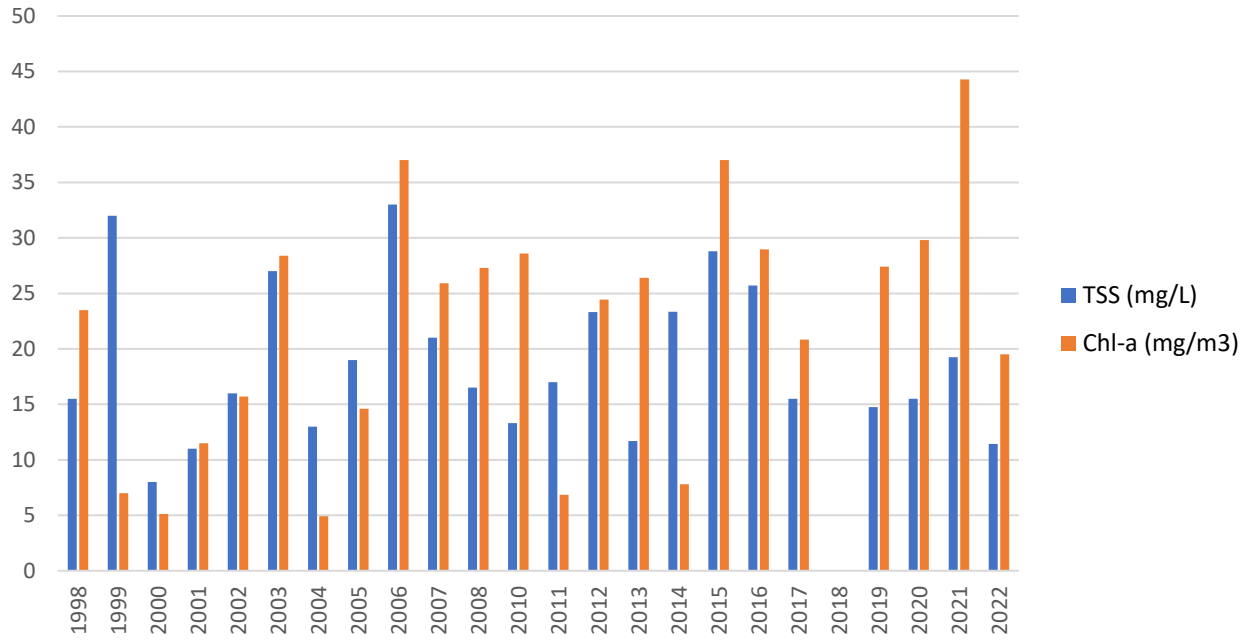
## Lake Okabena Water Quality Charts

The Okabena-Ocheda Watershed District and Worthington began sampling Lake Okabena at the same location monthly during the growing season (June through September) in 1998. The following graphs show growing season averages for select parameters and trend lines where relevant. It should be noted that conditions at the sampling site change quickly from day to day and hour to hour depending on wind direction, speed and temperature, so it is not possible to characterize whole the lake's condition by taking one sample in one location once per month.





Lake Okabena Growing Season Average  
Total Suspended Solids and Chlorophyll-a Compared  
1998 to 2022



Lake Okabena Growing Season Average  
Secchi Clairity and Total Phosphorus Compared - 1999 to 2022

