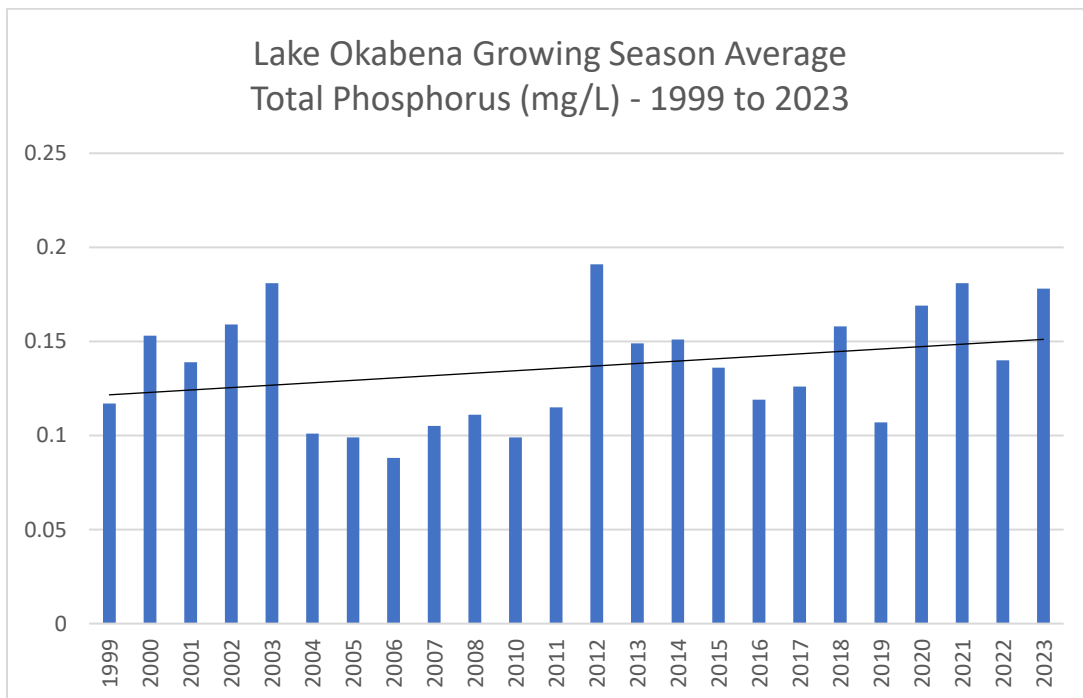
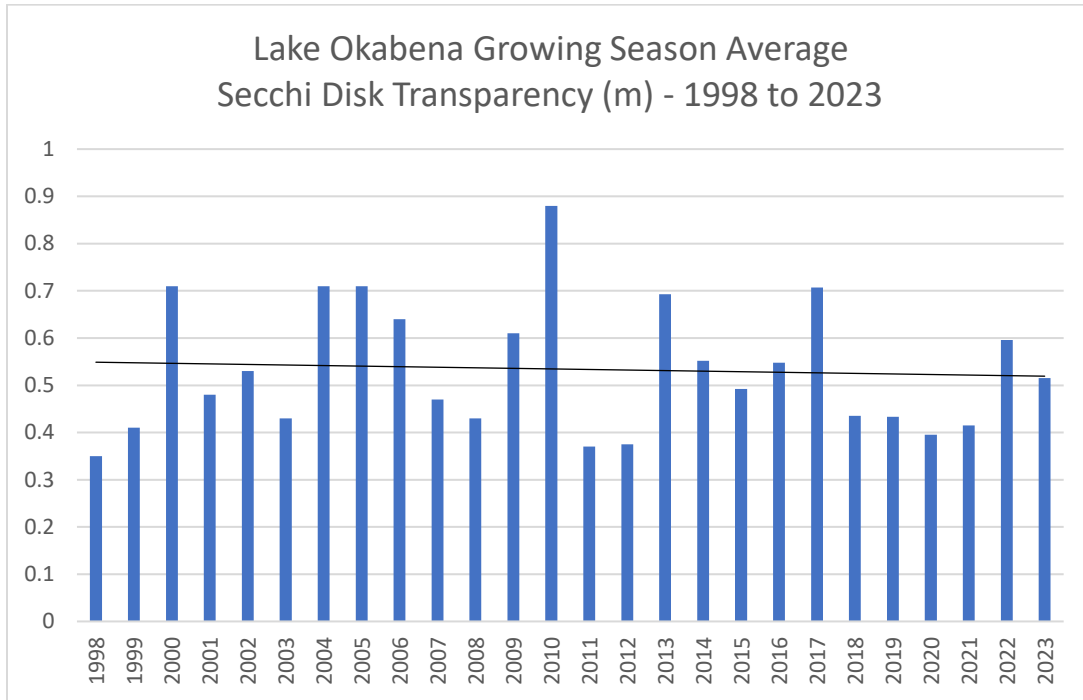
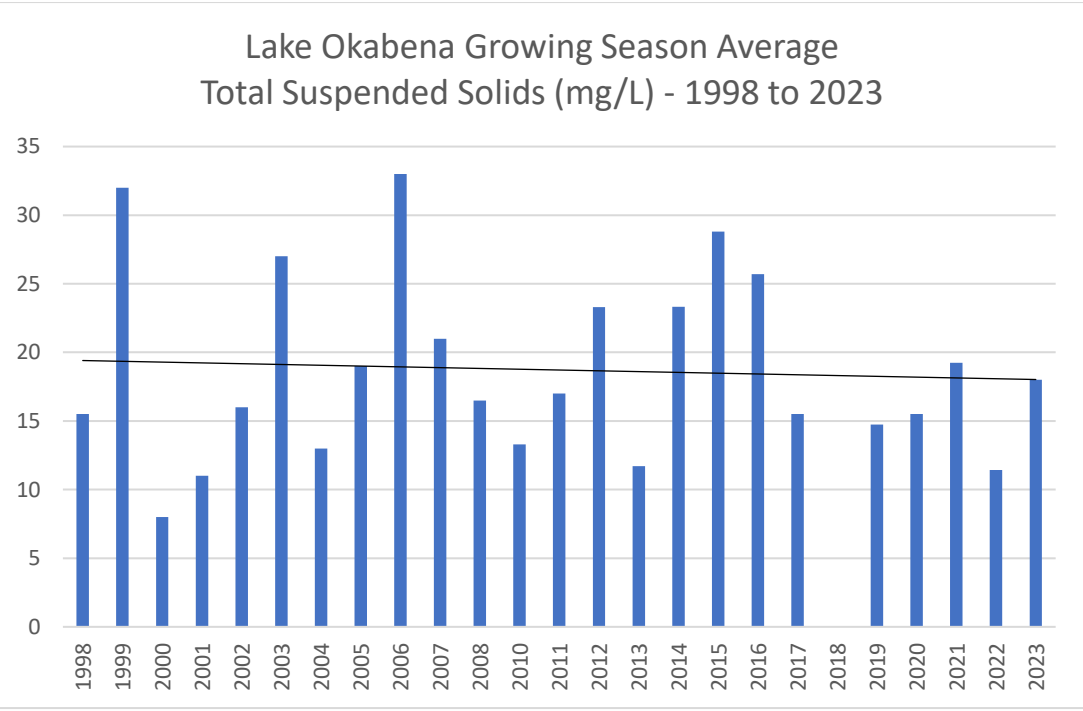
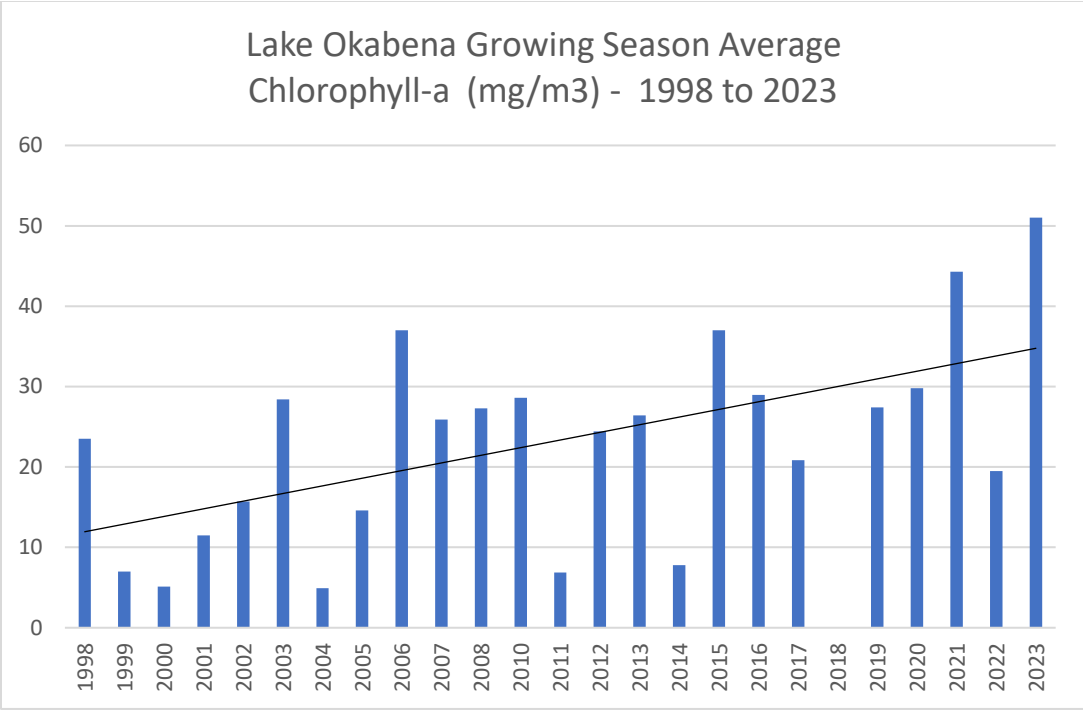


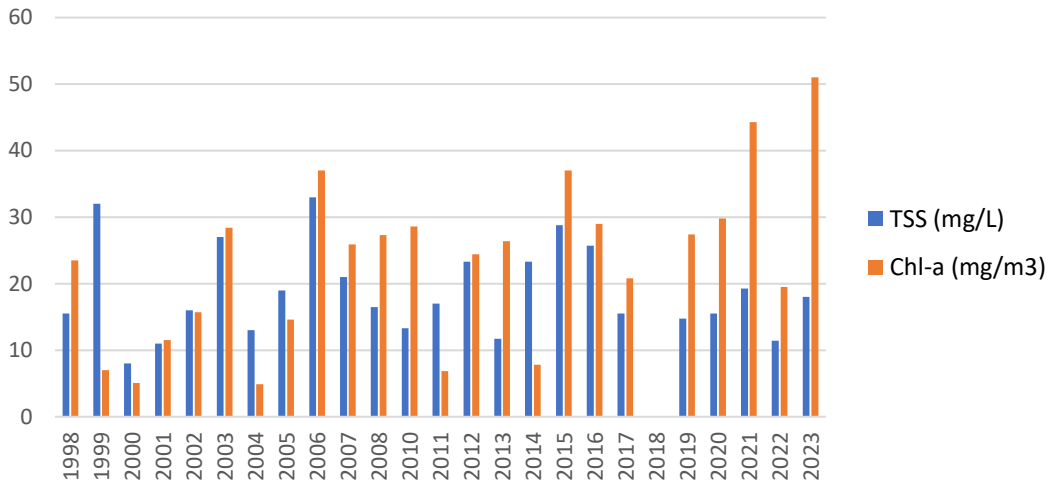
Lake Okabena Annual Average Water Quality Charts

The Okabena-Ocheda Watershed District and Worthington began sampling Lake Okabena at the same location monthly during the growing season (June through September) in 1998. The following graphs show growing season averages for select parameters and trend lines where relevant. It should be noted that conditions at the sampling site change quickly from day to day and hour to hour depending on wind direction, speed, and temperature. As a result, it is somewhat misleading to characterize the whole lake's condition by taking one sample, in one location, once per month and then to present the results as annual averages.





Lake Okabena Growing Season Average
Total Suspended Solids and Chlorophyll-a Compared
1998 to 2023



Lake Okabena Growing Season Average
Secchi Clairity and Total Phosphorus Compared

